



Nacra 15 World Championship

5 – 12 of July 2025

La Rochelle - France

The Organizing Authority is La Rochelle Nautique in conjunction with the International Nacra 15 Class Association (IN15CA)

NOTICE OF RACE

PC: Protest Committee or International Jury

NoR: Notice of Race

OA: Organizing Authority

RRS: Racing Rules of Sailing

SI: Sailing Instructions

RC: Race Committee

WS: World Sailing

ONB: Official Notice Board

In this document the notation in a rule:

[NP] means that a boat may not protest another boat for breaking that rule. This changes RRS 60.1(a).

[DP] means that a penalty for breach of that rule may, at the discretion of the Jury, be less than disqualification

[SP] denotes a rule for which a standard penalty may be applied by the race committee without a hearing. This changes RRS 63.1

1. RULES

- 1.1. The regatta is governed by the rules as defined in *The Racing Rules of Sailing* (RRS).
- 1.2. The Nacra 15 Equipment Regulations (ER) will apply and will be published on the ONB.
- 1.3. Racing rules will apply: RRS Appendix T, "Arbitration"
- 1.4. RRS 44.1 is changed so that the Two-Turns Penalty is replaced by the One-Turn Penalty.
- 1.5. No National Authority prescriptions shall apply.
- 1.6. The Nacra 15 Class Rules will apply. With respect to RRS 78.1, the penalty for any breach of a class rules not listed in the 'Standard Penalties' may, at the discretion of the Jury, be less than disqualification.
- 1.7. If there is a conflict between languages, the English text will take precedence.

2. SAILING INSTRUCTIONS

The Sailing Instructions will be available on 1 July 2025 on the ONB in [the official notice board](#).

3. COMMUNICATION

- 3.1. The ONB is located at : [Link](#).

- 3.2. [DP] From the first warning signal until the end of the last race of the day, except in an emergency or when using equipment provided by the race committee, a boat shall not make voice, radio or data transmissions and shall not receive voice, radio or data communication that is not available to all boats.

4. ELIGIBILITY AND ENTRY

- 4.1. The event is open to all boats of the standard Youth "C" foil Nacra 15 class.
- 4.2. Eligible boats may enter from January 23rd by completing the entry form online on [this link](#) and submitting it together with the required fee (see NoR 5).
- 4.3. To be considered an entry in the event, a boat shall complete all registration requirements and pay all fees before:
- * May 15th for an Early Entry Fee
 - * July 1st for a Standard Fee (To see NoR Art. 5)
- 4.4. Late entries (including payment entry fee) will be accepted until July 1st 2025.
- 4.5. All competitors shall comply with the World Sailing Eligibility Code (Regulation 19).
- 4.6. All crew shall be full members of the International Nacra 15 Class Association.
- 4.7. The following shall be presented at the registration on site:
- Competitors under 18 years of age (at the first day of competition) shall hand over a signed and completed parental (or guardian) consent declaration form [this link](#).
 - Third-party liability insurance for an amount of at least EUR 1,5 million
- 4.8. Coaches may enter from January 23rd by completing the entry form online on [link](#), submitting it together with the required fee (see NoR Art. 5.7)
- Coaches have to present during registration: Third-party liability insurance for an amount of at least EUR 1,5 million
- 4.9. In accordance with RRS 76.1, the OA will follow World Sailing decisions related to Russian & Belarus.

5. ENTRY FEES

- 5.1. Sailors entry fees are as follows:
- **Early entry Fee (paid before May 15th 2025) : € 475,00**
 - **Standard Fee (paid from May 15th 2025) : € 600,00**
 - *The entry fee includes the class fee to be paid by OA to the IN15CA*
The entry fee is due even if a boat withdraws the entry later or does not show up.
- 5.2. Sailors entry fees will only be refunded if the entry is rejected or cancelled by the organizing authority or the race committee or if the event is cancelled or the competitor is prevented from attending due to any governmental health regulation or a competitor has an injury (with written evidence by a doctor).
- 5.3. Sailors entry fee includes:
- *Opening Ceremony*
 - *Pasta party after the last race of each racing day*
 - *"Nacra Midweek Dinner"*
 - *Closing Ceremony*
- 5.4. Required entry fees must be paid online when registering via the [link](#)
- 5.5. Entry fees must be paid online. Entries are not completed until the required entry fee is received by the Organizing Authority in its account.

5.6. Early entry fees must be received before May 15th 2025 (= the final date of the early entry period); otherwise, the Standard entry-fee must be paid.

5.7. Coach fees are as follows:

- **Early Coach Fee (paid before May 15th 2025) : € 80,00**
- **Standard Coach fee (paid from May 15th 2025): € 150,00**

Entry fees must be paid online. Coach fees will only be refunded if the entry is rejected or cancelled by the organizing authority or the race committee or if the event is cancelled or the coach is prevented from attending due to any governmental health regulation or a coach (or his/her sailor) has an injury (with written evidence by a doctor).

5.8. The Coach fee includes:

- *Opening Ceremony*
- *Pasta party after the last race of each racing day*
- *"Nacra Midweek Dinner"*
- *Closing Ceremony*
- *Free trailer parking*
- *Free coach boat berth in the harbour*

5.9. Required coach fees must be paid online when registering via the link: [link](#).

6. CREW LIMITATION

6.1. The following crew limitations apply:

- There will be no minimum or maximum age limit.
- A competing team shall be able to right the boat from capsized unassisted and may be asked to demonstrate this afloat prior to racing.

7. ADVERTISING

7.1. DPJ Boats shall display event advertising chosen and supplied by the OA conform World Sailing Advertising Code 20.4.

7.2. The organizing authority may provide bibs that competitors are required to wear as permitted by the World Sailing Advertising Code.

8. QUALIFYING SERIES AND FINAL SERIES

8.1. The event may consist of a qualifying series and a final series if more than 60 boats are entered.

8.2. Split fleets will be in groups of approximately equal numbers of boats (± 1 boat).

9. SCHEDULE

9.1. The schedule, including registration, equipment inspection and racing, is as follows :

9.2.

July		
Saturday 5 th	10.00 – 13.00 14.00 – 18.00	Registration & measurement
Sunday 6 th	09.00 – 13.00 14.00 – 17.00	Registration & measurement
Monday 7 th	09.00 – 12.00 12.30 14.30 18.30	Registration & measurement Briefing sailors & coaches Practice Race Opening Ceremony
Tuesday 8 th	10.30 14.00	Briefing sailors & coaches 1 st Warning signal
Wednesday 9 th	TBC	Racing
Thursday 10 th	TBC	Racing Midweek dinner
Friday 11 th	TBC	Racing
Saturday 12 th	TBC Circa 17.00 (<i>as soon as possible</i>)	Racing Prize giving & closing ceremony

9.3. On Monday 7 July a MANDATORY briefing (for all competitors and coaches) is scheduled at 12.30. For the other days, an informal daily briefing is scheduled 90 minutes before the first warning signal of the day. In case the first start for the next day is scheduled at 9:00, the briefing will be at 19:00 the day before.

9.4. Total number of scheduled races: 18

- 4 Races per day scheduled on 8 – 11 July
- 2 Races scheduled on 12 July

9.5. On the last scheduled day of racing no warning signal will be made after 15.00

9.6. Boats intending to arrive before July 5th 2025 shall contact La Rochelle Nautique, contact@larochellenautique.com

10. EQUIPMENT INSPECTION

10.1. Boats shall comply with all Nacra 15 Class Rules.

10.2. Each boat shall be inspected according to the equipment online inspection time slots, link: <https://www.slottr.com/sheets/18287084>

10.3. All teams shall complete the online Equipment Inspection Form prior to inspection, link : <https://forms.gle/gj3uSE6bVnGnbfiB9>.

10.4. The procedures for Inspection are specified in the Equipment Regulations (ER) on the ONB.

11. VENUE

11.1. The 2025 Nacra 15 World Championship will be held in La Rochelle, **see Addendum-A.**

11.2. The location of the sailing area: **see Addendum-B.**

12. COURSE

12.1. The course to be sailed will be windward / leeward, including offset mark and leeward gate.

12.2. The target time will be 30 minutes.

13. INTERNATIONAL JURY

13.1. An International Jury will be appointed in accordance with RRS 91(b) and RRS Appendix N. The right of appeal will be denied in accordance with RRS 70.5.

14. SCORING

14.1. 4 races are required to be completed to constitute the championship.

14.2. Discard

a. When fewer than 5 races have been completed, a boat's series score will be the total of her race scores.

b. When from 5 to 10 races have been completed, a boat's series score will be the total of her race scores, excluding her worst score

c. When 11 or more races have been completed, a boat's series score will be the total of her race scores, excluding her two worst scores.

14.3. Nacra 15 U19 and U17 results will be extracted from overall results without recalculation.

14.4. RRS 90.3 (e) applies.

15. [DP] SUPPORT VESSELS

15.1. Support team vessels shall be registered with the OA.

15.2. Support team vessels will be required to comply with the Support Vessel Regulations (see Addendum C).

15.3. [DP] Support team vessels shall be marked with their National letter.

16. CHARTERED OR LOANED BOATS

16.1. A chartered or loaned boat may carry national letters or a sail number in contravention of her class rules, provided that the race committee has approved her sail identification before the first race. See RRS G3.

16.2. To rent a charter boat please contact <https://nacrasailing.com/charters>

17. BERTHING/ PARKING

[DP] [NP] Boats, trailers, and cars shall be kept in their assigned places.

18. HAUL – OUT RESTRICTIONS

N/A

19. DIVING EQUIPMENT AND PLASTIC POOLS

N/A

20. DATA PROTECTION, MEDIA RIGHTS, CAMERA AND ELETTRONIC EQUIPMENT

- 20.1. By participating in this event, competitors grant to the OA and its sponsors the right in perpetuity to make, use and show, from time to time at their discretion, any motion pictures and live, taped or filmed television and other reproductions of the athlete and the boat, produced during the period of the competition without compensation.
- 20.2. [DP] [NP] If required by the OA competitors shall give interviews at the regatta.
- 20.3. DP] [NP] Boats may be required to carry cameras, sound equipment and positioning equipment as specified and supplied by the OA.
- 20.4. DP] [NP] Competitors shall not interfere with the normal working of the OA supplied media equipment.

21. RISK STATEMENT

- 21.1. RRS 3 states: "The responsibility for a boat's decision to participate in a race or to continue to race is hers alone." By participating in this event each competitor agrees and acknowledges that sailing is a potentially dangerous activity with inherent risks. These risks include strong winds and rough seas, sudden changes in weather, failure of equipment, boat handling errors, poor seamanship by other boats, loss of balance on an unstable platform and fatigue resulting in increased risk of injury. Inherent in the sport of sailing is the risk of permanent, catastrophic injury or death by drowning, trauma, hypothermia or other causes.
- 21.2. The organizing authority will not accept any liability for material damage or personal injury or death sustained in conjunction with or prior to, during, or after the regatta.

22. ENVIRONMENTAL RESPONSIBILITY

- 22.1. It is recalled the Basic Principle which states: "Participants are encouraged to minimize any adverse environmental impact of the sport of sailing", it is recommended that care be taken to protect the environment at all times during and after the event. Especially attention is drawn to RRS 47 -TRASH DISPOSAL- which states: "Competitors and support persons shall not intentionally put trash in the water. This rule applies at all times while afloat. The penalty for a breach of this rule may be less than disqualification".

23. [NP] INSURANCE

- 23.1. Each participating boat shall be insured with valid third-party liability insurance including the coverage of risks at regattas, with a minimum cover of EURO 2 million per incident or the equivalent.
- 23.2. Each support vessel shall have a valid insurance certificate including third party liability coverage of at least Euro 1,5 million (or equivalent) per incident.
- 23.3. The OA is not responsible for verifying the status or validity of certificates.

24. PRIZES

24.1. Nacra 15 Titles and ranking prizes

- a. The overall winner will be awarded the title "**Nacra 15 World Champion**". Prizes for the top 3 teams of the championship (overall).
- b. The U19 winner will be awarded the title "**Nacra 15 class - U19 World Champion**" (both competitors under 19 years old, during the last racing day). Prizes for the top 3 teams U19.
- c. The U17 winner will be awarded the title "**Nacra 15 class - U17 World Champion**" (both competitors under 17 years old, during the last racing day). Prizes for the top 3 team U17.
- d. Nations Cup: The top 3 national teams (combined results of the best 3 boats of each nation).
- e. The Organizing Authority may award additional prizes.

25. FURTHER INFORMATION

For further information, please contact:

La Rochelle Nautique

Address : 20 Avenue Antoine Albeau

Port des Minimés

17000 La Rochelle - France

Phone: +33 (0)5 46 44 49 20

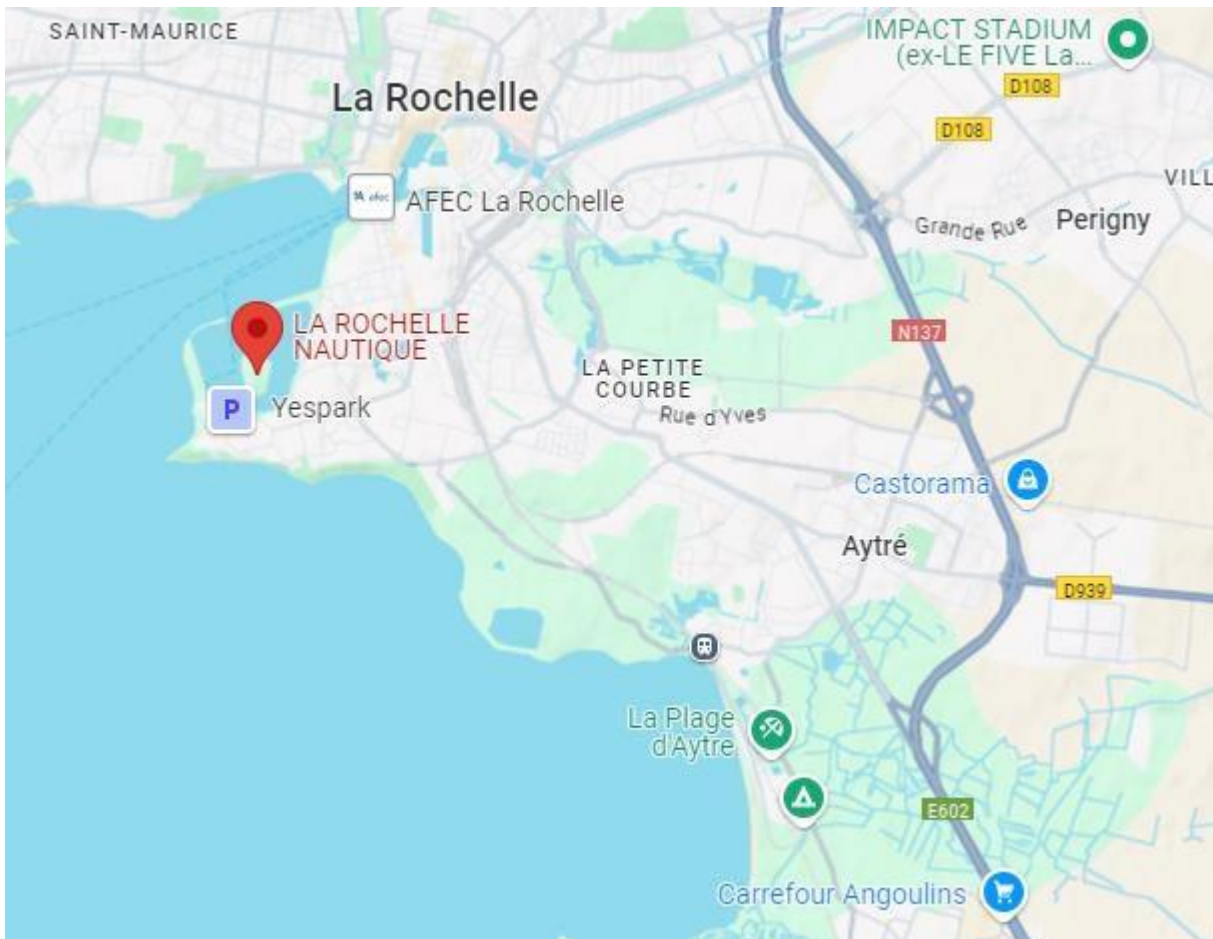
Email: contact@larochellenautique.com

Website : www.larochellenautique.com

Or contact :

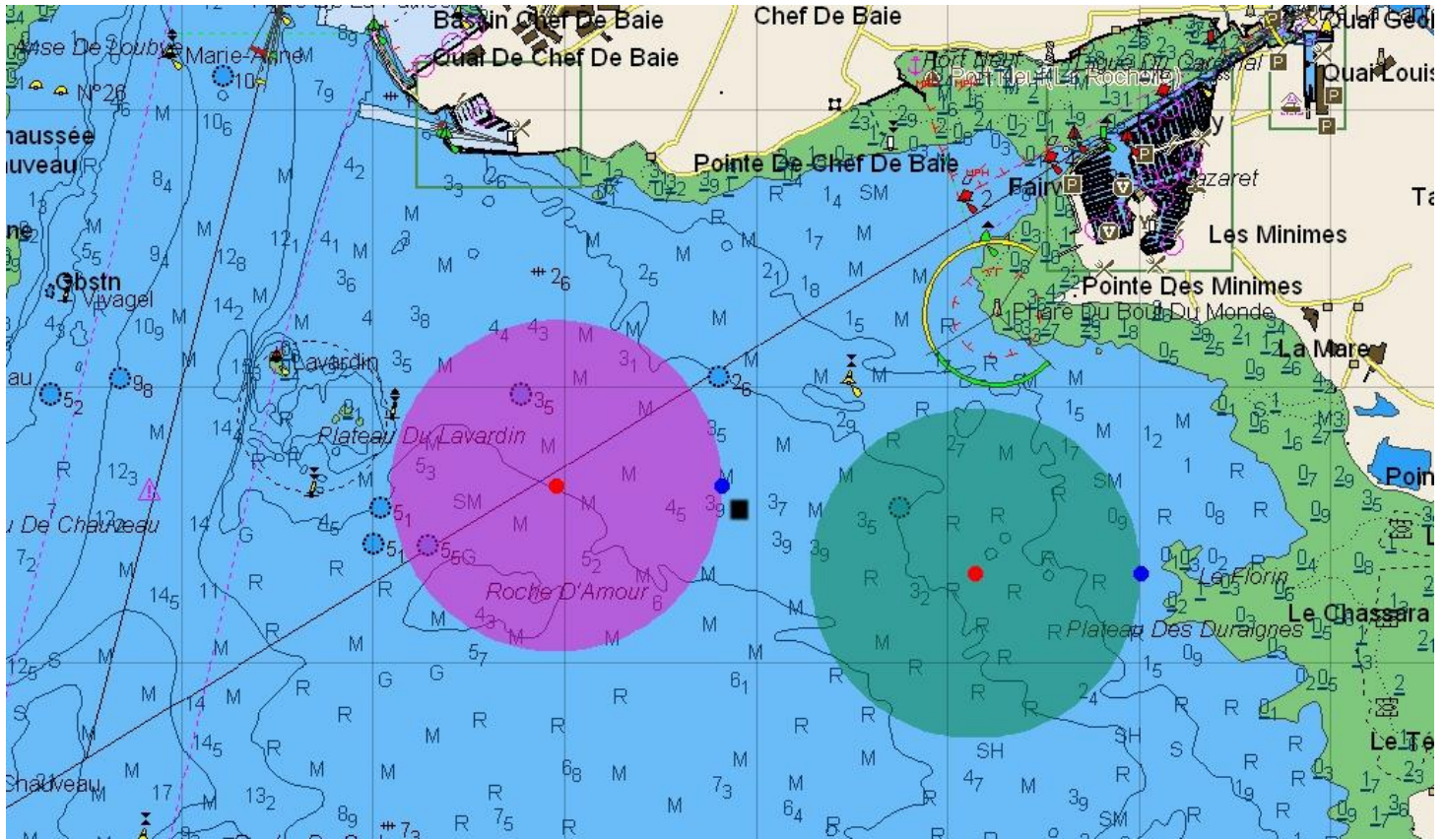
International Nacra 15 Class: manager@nacra15class.com

Addendum A – LOCATION EVENT VENUE



20 Avenue Antoine Albeau
17000 La Rochelle

Addendum B – LOCATION RACE AREA



Addendum C - SUPPORT VESSEL REGULATIONS

Support Vessels must carry the following Equipment on board

- Life jackets / buoyance aids for the driver and all passengers,
- Engine kill cord (also known as a safety lanyard or automatic engine immobiliser) with a spare kill cord on the support vessel
- VHF radio capable of receiving instruction from Safety or Race Committee
- First-aid kit
- Adequate anchor and tackle for conditions and depth
- Tow rope (minimum 15m long and 10mm thick)
- Knife

Support Vessel Regulations

- Support Vessels must be registered with the Organizing Authority and must be marked with their applicable national sail letters clearly displayed, the minimum height for these letters is 200mm.
- Support Vessels must comply with all local regulations
- Support Vessels must follow Race Committee instructions on the designated VHF channel
- **Kill cords shall be worn at all times when the engine is running**
- Life jackets / buoyance aids must be **worn at all times when afloat** (by all persons on board)

Support vessels may not be positioned, except during rescue operations

- Closer than 100 meters of any boat racing.
- Within 100 meters to leeward of the starting line and its extensions from the warning signal until all boats have left the starting area or the race committee signals a postponement, general recall or abandonment.
- Within 100 meters of any mark of the course while boats are in the vicinity of that mark.
- Within 100 meters of the finishing line while boats are finishing.
- In addition, support vessels that are motoring above 5 knots shall remain at least 150 meters from any boat racing.

Support vessels will be part of rescue operations, monitored / controlled by Race Committee